

NOTES:

1) FOR OPTIMAL REINFORCEMENT PLACEMENT IN THE NUDURA FORM, SPACING OF HORIZONTAL REINFORCEMENT TO BE SPECIFIED AT 18" (457mm) O.C. AND VERTICAL REINFORCEMENT TO BE SPECIFIED AT MULTIPLES OF 8" (203mm) O.C. REFER TO NUDURA REINFORCEMENT PLACEMENT DETAILS.

This detail is for general informational purposes, only. The project design professional determines, in its sole discretion, whether this detail or a functionally equivalent detail is best suited for the project with respect to any architecture, engineering, and design requirements, including any local building code requirements. If this document is not reviewed and the product is not approved for use by a licensed design professional, the customer agrees that the detail may contain substantive flaws requiring correction, and hereby releases Tremco CPG Inc. and Prebuck, LLC from any and all liability related to the design and installation of the product. This detail is subject to change without notice. Contact Tremco and Prebuck to ensure you have the most recent version.

Non-Combustible Construction - Roof Connections



Nudura Technical Support: 866-468-6299
International: +1 705-726-9499

Detail: Nudura 8" (203mm) Form Unit, Steel Joist Roof, Bearing Wall, Exterior Finish
as Specified

Drawn by: JN

Checked by: KS

Scale: 1:8

Revision #: 05

Revised by: KAB

Date: 3/13/2024

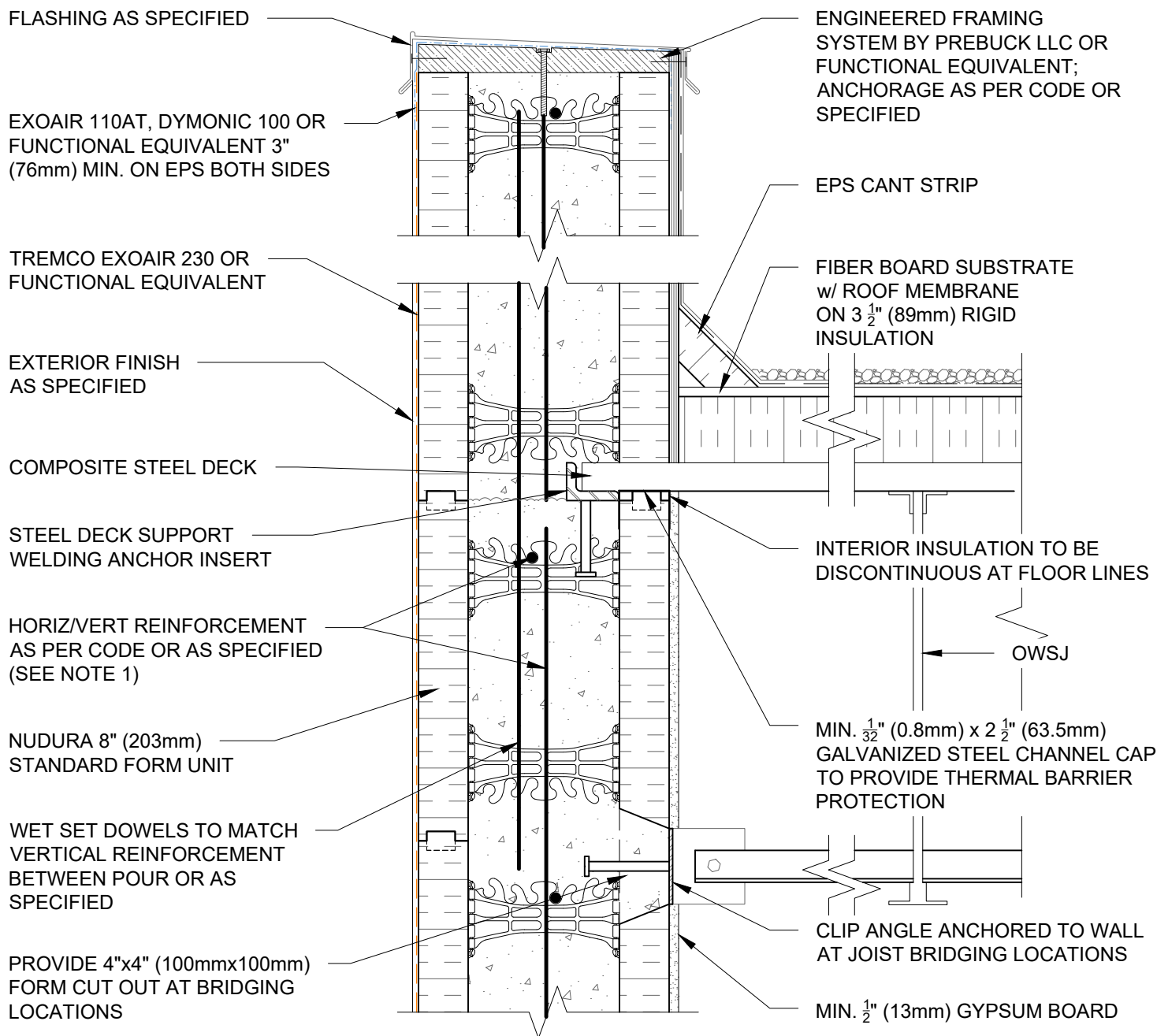
File Name:

F8C08



Construction Products Group

www.tremcocpg.com



NOTES:

1) FOR OPTIMAL REINFORCEMENT PLACEMENT IN THE NUDURA FORM, SPACING OF HORIZONTAL REINFORCEMENT TO BE SPECIFIED AT 18" (457mm) O.C. AND VERTICAL REINFORCEMENT TO BE SPECIFIED AT MULTIPLES OF 8" (203mm) O.C. REFER TO NUDURA REINFORCEMENT PLACEMENT DETAILS.

This detail is for general informational purposes, only. The project design professional determines, in its sole discretion, whether this detail or a functionally equivalent detail is best suited for the project with respect to any architecture, engineering, and design requirements, including any local building code requirements. If this document is not reviewed and the product is not approved for use by a licensed design professional, the customer agrees that the detail may contain substantive flaws requiring correction, and hereby releases Tremco CPG Inc. and Prebuck, LLC from any and all liability related to the design and installation of the product. This detail is subject to change without notice. Contact Tremco and Prebuck to ensure you have the most recent version.

Non-Combustible Construction - Roof Connections



Nudura Technical Support: 866-468-6299
International: +1 705-726-9499

Detail: Nudura 8" (203mm) Form Unit, Steel Joist Roof, Side Wall, Exterior Finish as Specified

Drawn by: TVC

Checked by: KS

Scale: 1:8

Revision #: 05

Revised by: KAB

Date: 3/13/2024

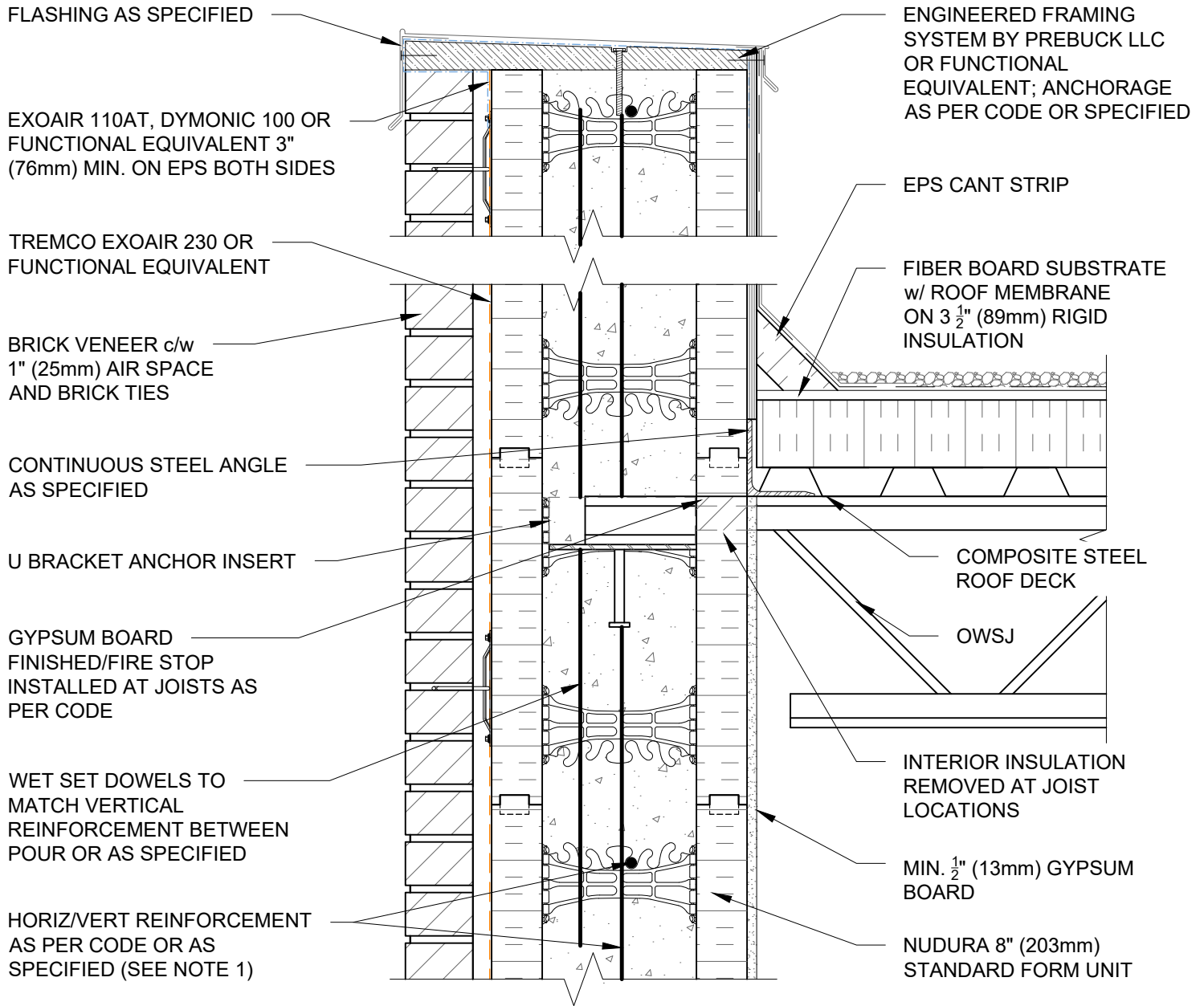
File Name:

F8C09



Construction Products Group

www.tremcocpg.com





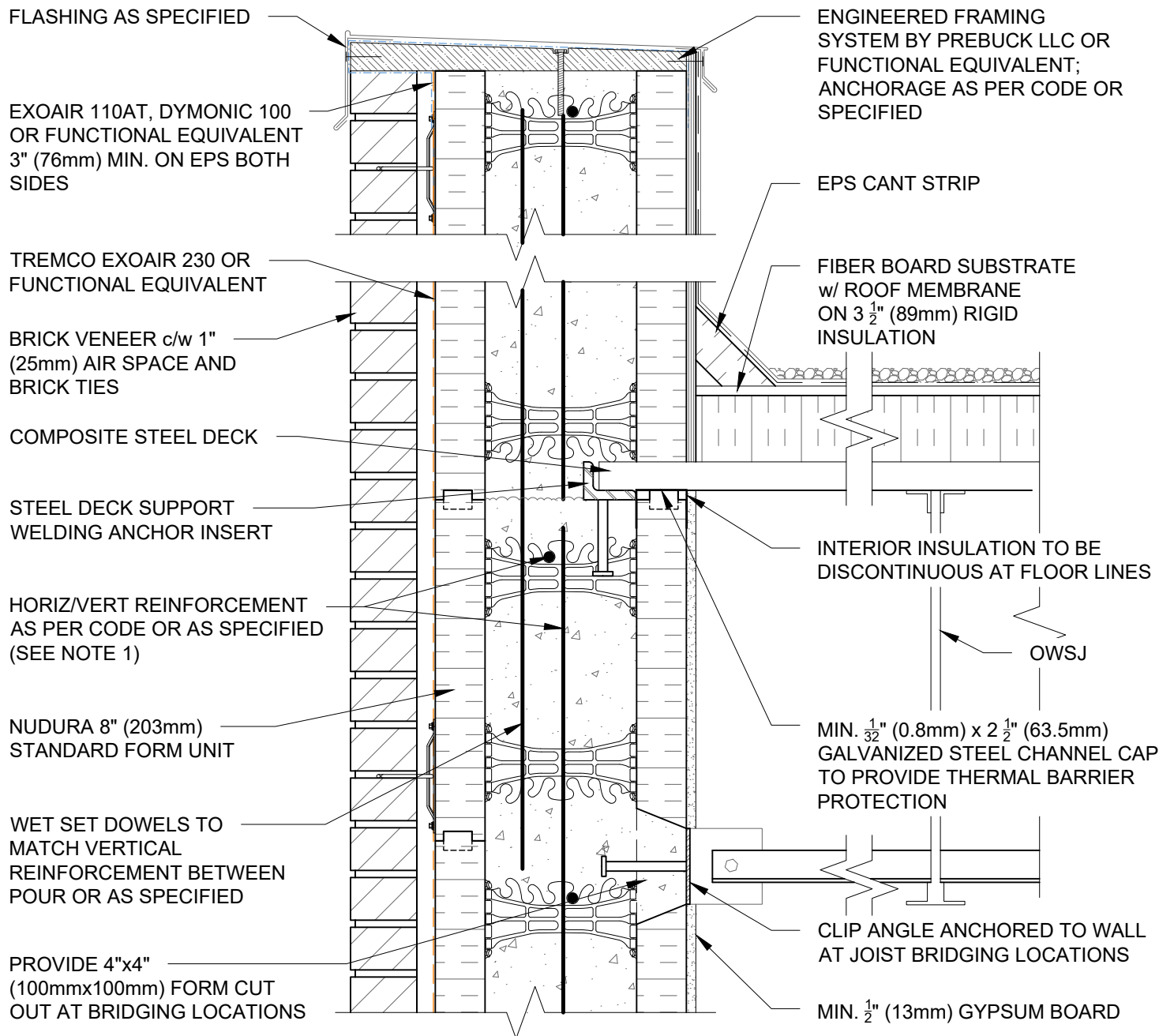
NOTES:

1) FOR OPTIMAL REINFORCEMENT PLACEMENT IN THE NUDURA FORM, SPACING OF HORIZONTAL REINFORCEMENT TO BE SPECIFIED AT 18" (457mm) O.C. AND VERTICAL REINFORCEMENT TO BE SPECIFIED AT MULTIPLES OF 8" (203mm) O.C. REFER TO NUDURA REINFORCEMENT PLACEMENT DETAILS.

This detail is for general informational purposes, only. The project design professional determines, in its sole discretion, whether this detail or a functionally equivalent detail is best suited for the project with respect to any architecture, engineering, and design requirements, including any local building code requirements. If this document is not reviewed and the product is not approved for use by a licensed design professional, the customer agrees that the detail may contain substantive flaws requiring correction, and hereby releases Tremco CPG Inc. and Prebuck, LLC from any and all liability related to the design and installation of the product. This detail is subject to change without notice. Contact Tremco and Prebuck to ensure you have the most recent version.

Non-Combustible Construction - Roof Connections

 Nudura Technical Support: 866-468-6299 International: +1 705-726-9499	Detail: Nudura 8" (203mm) Form Unit, Steel Joist Roof, Bearing Wall, Brick Veneer Finish			File Name: F8C11	 Construction Products Group
	Drawn by: TVC	Checked by: KS	Scale: 1:8		
	Revision #: 05	Revised by: KAB	Date: 3/13/2024		
	www.tremcocpg.com				



NOTES:

1) FOR OPTIMAL REINFORCEMENT PLACEMENT IN THE NUDURA FORM, SPACING OF HORIZONTAL REINFORCEMENT TO BE SPECIFIED AT 18" (457mm) O.C. AND VERTICAL REINFORCEMENT TO BE SPECIFIED AT MULTIPLES OF 8" (203mm) O.C. REFER TO NUDURA REINFORCEMENT PLACEMENT DETAILS.

This detail is for general informational purposes, only. The project design professional determines, in its sole discretion, whether this detail or a functionally equivalent detail is best suited for the project with respect to any architecture, engineering, and design requirements, including any local building code requirements. If this document is not reviewed and the product is not approved for use by a licensed design professional, the customer agrees that the detail may contain substantive flaws requiring correction, and hereby releases Tremco CPG Inc. and Prebuck, LLC from any and all liability related to the design and installation of the product. This detail is subject to change without notice. Contact Tremco and Prebuck to ensure you have the most recent version.

Non-Combustible Construction - Roof Connections



Nudura Technical Support: 866-468-6299
International: +1 705-726-9499

Detail: Nudura 8" (203mm) Form Unit, Steel Joist Roof, Side Wall,
Brick Veneer Finish

Drawn by: TVC

Checked by: KS

Scale: 1:8

Revision #: 04

Revised by: KAB

Date: 3/13/2024

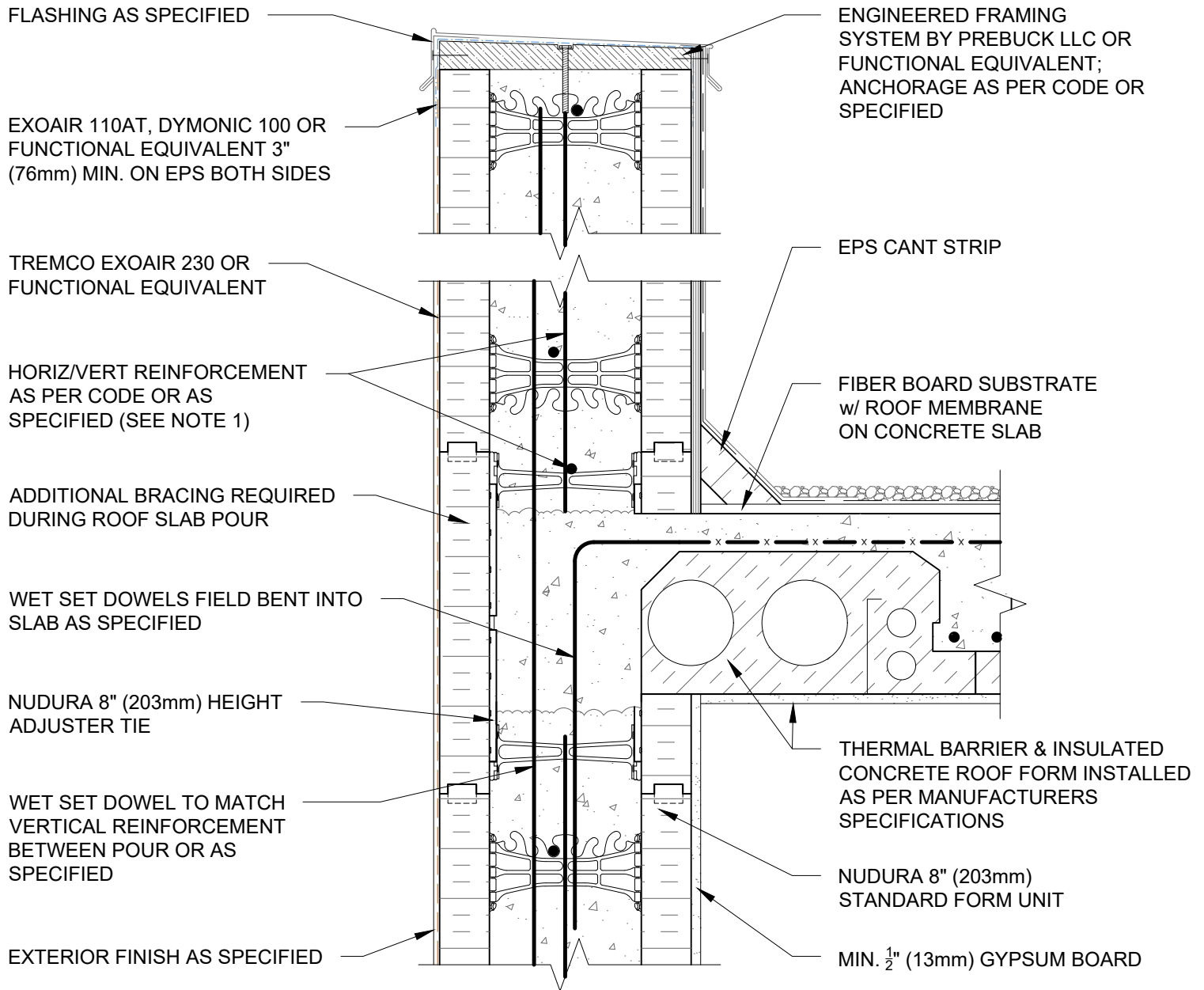
File Name:

F8C12



Construction Products Group

www.tremcocpg.com



NOTES:

1) FOR OPTIMAL REINFORCEMENT PLACEMENT IN THE NUDURA FORM, SPACING OF HORIZONTAL REINFORCEMENT TO BE SPECIFIED AT 18" (457mm) O.C. AND VERTICAL REINFORCEMENT TO BE SPECIFIED AT MULTIPLES OF 8" (203mm) O.C. REFER TO NUDURA REINFORCEMENT PLACEMENT DETAILS.

This detail is for general informational purposes, only. The project design professional determines, in its sole discretion, whether this detail or a functionally equivalent detail is best suited for the project with respect to any architecture, engineering, and design requirements, including any local building code requirements. If this document is not reviewed and the product is not approved for use by a licensed design professional, the customer agrees that the detail may contain substantive flaws requiring correction, and hereby releases Tremco CPG Inc. and Prebuck, LLC from any and all liability related to the design and installation of the product. This detail is subject to change without notice. Contact Tremco and Prebuck to ensure you have the most recent version.

Non-Combustible Construction - Roof Connections



Detail: Nudura 8" (203mm) Form Unit, ICRS Connection, ICRS Resting on Form, Exterior Side Wall, Exterior Finish as Specified

Drawn by: TVC

Checked by: KS

Scale: 1:8

Revision #: 04

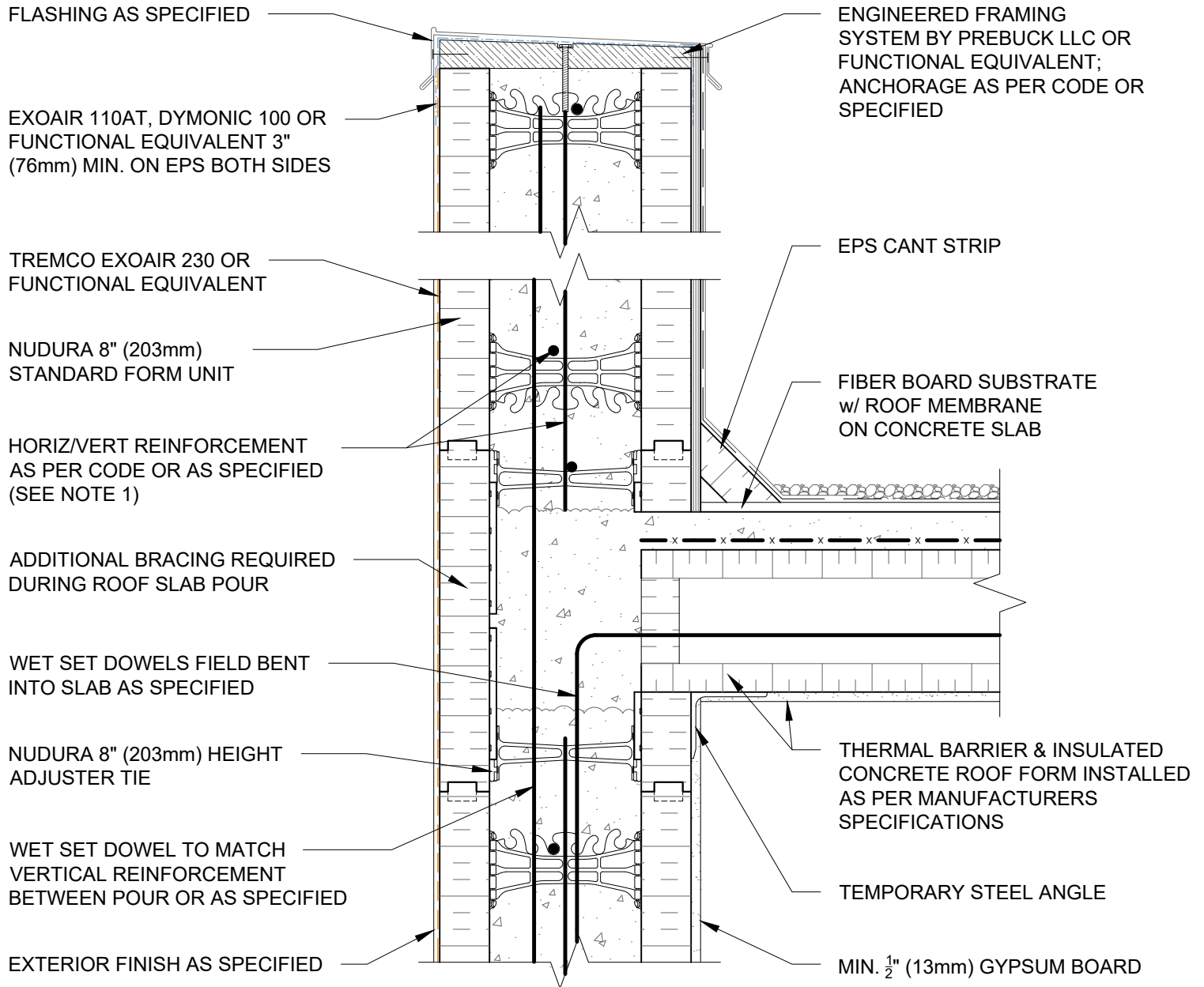
Revised by: KAB

Date: 3/13/2024

File Name:

F8D01






NOTES:

1) FOR OPTIMAL REINFORCEMENT PLACEMENT IN THE NUDURA FORM, SPACING OF HORIZONTAL REINFORCEMENT TO BE SPECIFIED AT 18" (457mm) O.C. AND VERTICAL REINFORCEMENT TO BE SPECIFIED AT MULTIPLES OF 8" (203mm) O.C. REFER TO NUDURA REINFORCEMENT PLACEMENT DETAILS.

This detail is for general informational purposes only. The project design professional determines, in its sole discretion, whether this detail or a functionally equivalent detail is best suited for the project with respect to any architecture, engineering, and design requirements, including any local building code requirements. If this document is not reviewed and the product is not approved for use by a licensed design professional, the customer agrees that the detail may contain substantive flaws requiring correction, and hereby releases Tremco CPG Inc. and Prebuck, LLC from any and all liability related to the design and installation of the product. This detail is subject to change without notice. Contact Tremco and Prebuck to ensure you have the most recent version.

Non-Combustible Construction - Roof Connections

 <p>Nudura Technical Support: 866-468-6299 International: +1 705-726-9499</p>	Detail: Nudura 8" (203mm) Form Unit, ICRS Connection, ICRS Resting on Form, Exterior Bearing Wall, Exterior Finish as Specified			File Name:	
	Drawn by: TVC	Checked by: KS	Scale: 1:8	F8D02	
	Revision #: 04	Revised by: KAB	Date: 3/13/2024		
	www.tremcocpg.com				

FLASHING AS SPECIFIED

EXOAIR 110AT, DYMONIC 100 OR
FUNCTIONAL EQUIVALENT 3"
(76mm) MIN. ON EPS BOTH SIDES

TREMCO EXOAIR 230 OR
FUNCTIONAL EQUIVALENT

HORIZ/VERT REINFORCEMENT
AS PER CODE OR AS
SPECIFIED (SEE NOTE 1)

ADDITIONAL BRACING
REQUIRED DURING ROOF
SLAB POUR

WET SET DOWELS FIELD
BENT INTO SLAB AS
SPECIFIED

NUDURA 8" (203mm) HEIGHT
ADJUSTER TIE

WET SET DOWEL TO MATCH
VERTICAL REINFORCEMENT
BETWEEN POUR OR AS
SPECIFIED

BRICK VENEER c/w 1"
(25mm) AIR SPACE AND
BRICK TIES

ENGINEERED FRAMING
SYSTEM BY PREBUCK LLC
OR FUNCTIONAL
EQUIVALENT; ANCHORAGE
AS PER CODE OR SPECIFIED

EPS CANT STRIP

FIBER BOARD SUBSTRATE
w/ ROOF MEMBRANE
ON CONCRETE SLAB

THERMAL BARRIER &
INSULATED CONCRETE ROOF
FORM INSTALLED AS PER
MANUFACTURERS
SPECIFICATIONS

NUDURA 8" (203mm)
STANDARD FORM UNIT

MIN. 1/2" (13mm) GYPSUM BOARD

NOTES:

1) FOR OPTIMAL REINFORCEMENT PLACEMENT IN THE NUDURA FORM,
SPACING OF HORIZONTAL REINFORCEMENT TO BE SPECIFIED AT 18"
(457mm) O.C. AND VERTICAL REINFORCEMENT TO BE SPECIFIED AT
MULTIPLES OF 8" (203mm) O.C. REFER TO NUDURA REINFORCEMENT
PLACEMENT DETAILS.

This detail is for general informational purposes, only. The project design professional determines, in its sole discretion, whether this detail or a functionally equivalent detail is best suited for the project with respect to any architecture, engineering, and design requirements, including any local building code requirements. If this document is not reviewed and the product is not approved for use by a licensed design professional, the customer agrees that the detail may contain substantive flaws requiring correction, and hereby releases Tremco CPG Inc. and Prebuck, LLC from any and all liability related to the design and installation of the product. This detail is subject to change without notice. Contact Tremco and Prebuck to ensure you have the most recent version.

Non-Combustible Construction - Roof Connections



Nudura Technical Support: 866-468-6299
International: +1 705-726-9499

Detail: Nudura 8" (203mm) Form Unit, ICRS Connection, ICRS Resting on Form,
Exterior Side Wall, Brick Veneer Finish

Drawn by: TVC

Checked by: KS

Scale: 1:8

Revision #: 04

Revised by: KAB

Date: 3/13/2024

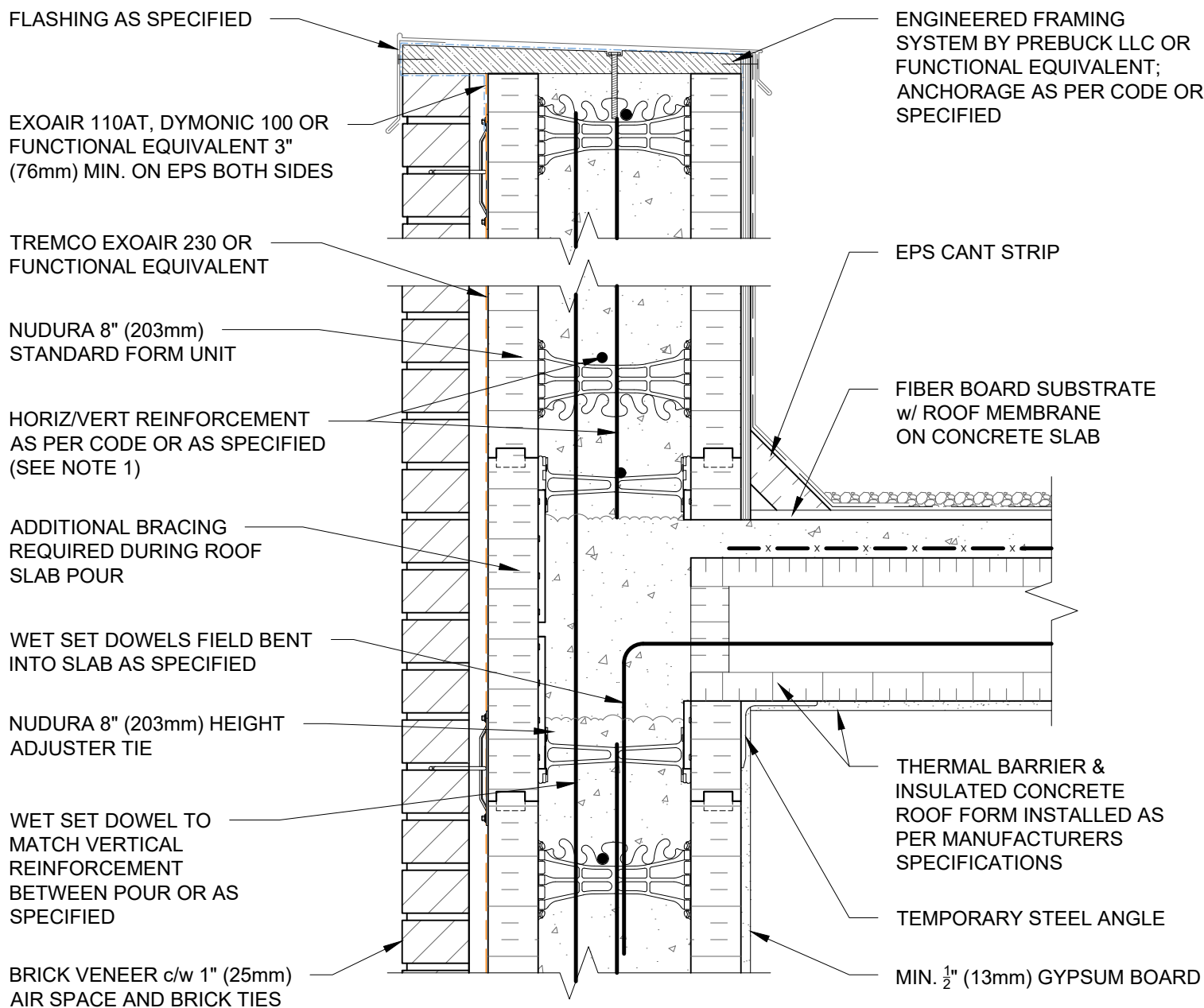
www.tremcocpg.com

File Name:

F8D03



Construction Products Group



NOTES:

1) FOR OPTIMAL REINFORCEMENT PLACEMENT IN THE NUDURA FORM, SPACING OF HORIZONTAL REINFORCEMENT TO BE SPECIFIED AT 18" (457mm) O.C. AND VERTICAL REINFORCEMENT TO BE SPECIFIED AT MULTIPLES OF 8" (203mm) O.C. REFER TO NUDURA REINFORCEMENT PLACEMENT DETAILS.

This detail is for general informational purposes, only. The project design professional determines, in its sole discretion, whether this detail or a functionally equivalent detail is best suited for the project with respect to any architecture, engineering, and design requirements, including any local building code requirements. If this document is not reviewed and the product is not approved for use by a licensed design professional, the customer agrees that the detail may contain substantive flaws requiring correction, and hereby releases Tremco CPG Inc. and Prebuck, LLC from any and all liability related to the design and installation of the product. This detail is subject to change without notice. Contact Tremco and Prebuck to ensure you have the most recent version.

Non-Combustible Construction - Roof Connections



Nudura Technical Support: 866-468-6299
International: +1 705-726-9499

Detail: Nudura 8" (203mm) Form Unit, ICRS Connection, ICRS Resting on Form, Exterior Bearing Wall, Brick Veneer Finish

Drawn by: TVC

Checked by: KS

Scale: 1:8

Revision #: 04

Revised by: KAB

Date: 3/13/2024

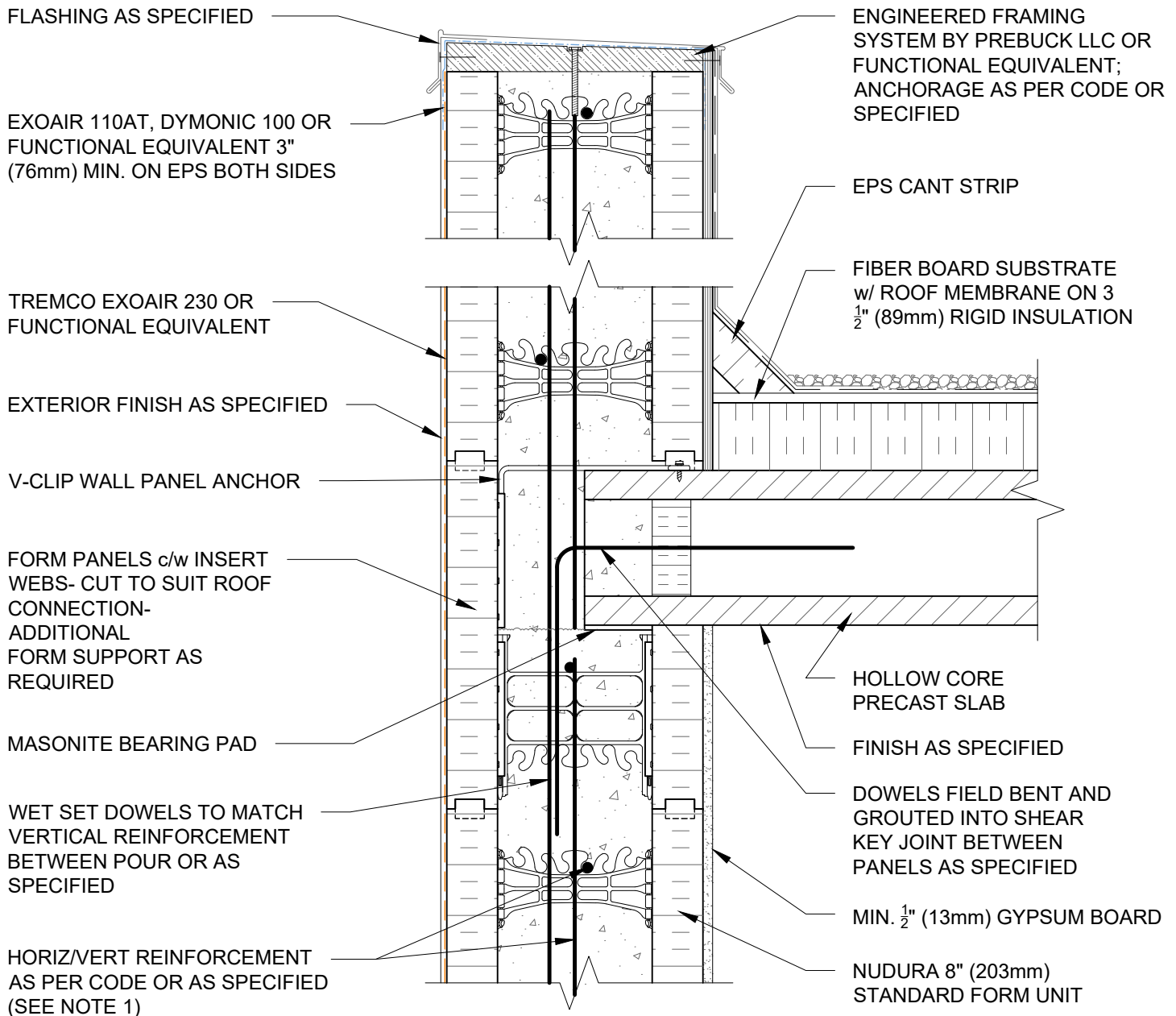
File Name:

F8D04



Construction Products Group

www.tremcocpg.com



NOTES:

1) FOR OPTIMAL REINFORCEMENT PLACEMENT IN THE NUDURA FORM, SPACING OF HORIZONTAL REINFORCEMENT TO BE SPECIFIED AT 18" (457mm) O.C. AND VERTICAL REINFORCEMENT TO BE SPECIFIED AT MULTIPLES OF 8" (203mm) O.C. REFER TO NUDURA REINFORCEMENT PLACEMENT DETAILS.

This detail is for general informational purposes, only. The project design professional determines, in its sole discretion, whether this detail or a functionally equivalent detail is best suited for the project with respect to any architecture, engineering, and design requirements, including any local building code requirements. If this document is not reviewed and the product is not approved for use by a licensed design professional, the customer agrees that the detail may contain substantive flaws requiring correction, and hereby releases Tremco CPG Inc. and Prebuck, LLC from any and all liability related to the design and installation of the product. This detail is subject to change without notice. Contact Tremco and Prebuck to ensure you have the most recent version.

Non-Combustible Construction - Roof Connections



Nudura Technical Support: 866-468-6299
International: +1 705-726-9499

Detail: Nudura 8" (203mm) Form Unit, Hollow Core Precast Roof, Exterior Bearing Wall, Exterior Finish as Specified

Drawn by: TVC

Checked by: KS

Scale: 1:8

Revision #: 04

Revised by: KAB

Date: 3/13/2024

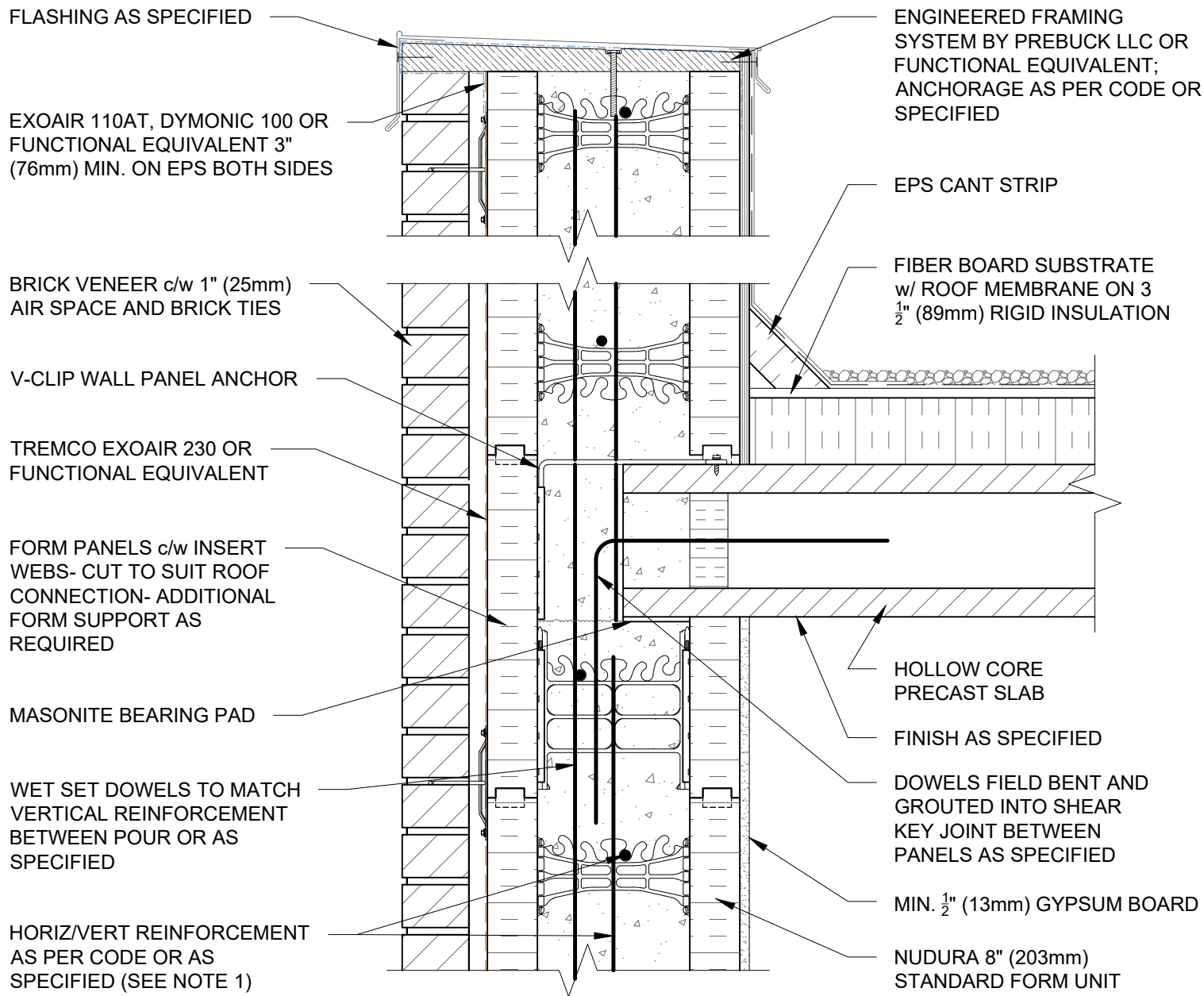
File Name:

F8E01



Construction Products Group

www.tremcocpg.com

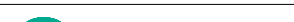
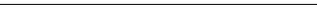


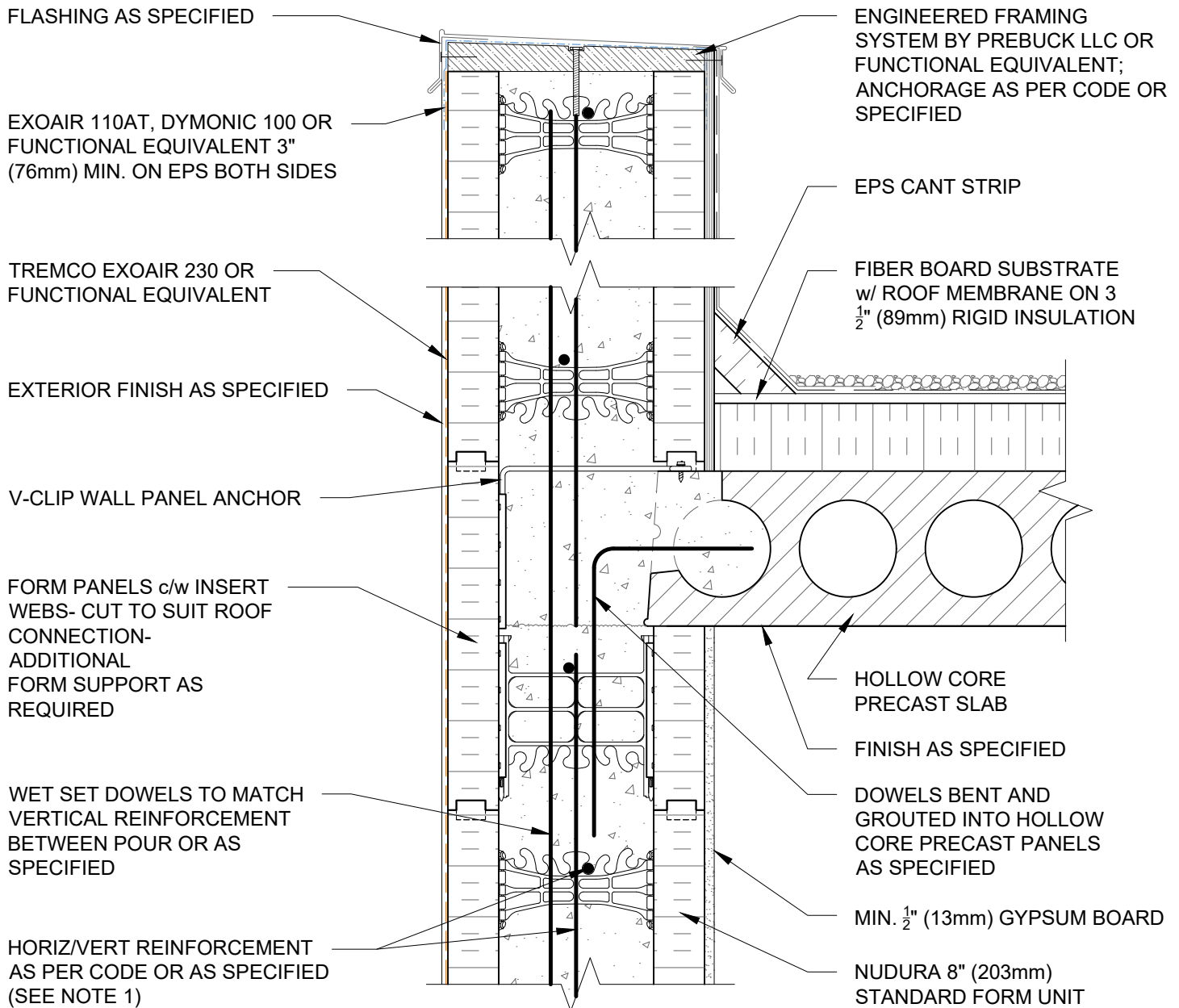
NOTES:

1) FOR OPTIMAL REINFORCEMENT PLACEMENT IN THE NUDURA FORM, SPACING OF HORIZONTAL REINFORCEMENT TO BE SPECIFIED AT 18" (457mm) O.C. AND VERTICAL REINFORCEMENT TO BE SPECIFIED AT MULTIPLES OF 8" (203mm) O.C. REFER TO NUDURA REINFORCEMENT PLACEMENT DETAILS.

This detail is for general informational purposes, only. The project design professional determines, in its sole discretion, whether this detail or a functionally equivalent detail is best suited for the project with respect to any architecture, engineering, and design requirements, including any local building code requirements. If this document is not reviewed and the product is not approved for use by a licensed design professional, the customer agrees that the detail may contain substantive flaws requiring correction, and hereby releases Tremco CPG Inc. and Prebuck, LLC from any and all liability related to the design and installation of the product. This detail is subject to change without notice. Contact Tremco and Prebuck to ensure you have the most recent version.

Non-Combustible Construction - Roof Connections

 Nudura Technical Support: 866-468-6299 International: +1 705-726-9499	Detail: Nudura 8" (203mm) Form Unit, Hollow Core Precast Roof, Exterior Bearing Wall, Brick Veneer Finish			File Name: F8E02	 Construction Products Group
	Drawn by: TVC	Checked by: KS	Scale: 1:8		
	Revision #: 04	Revised by: KAB	Date: 3/13/2024		
	www.tremcocpg.com				



NOTES:

1) FOR OPTIMAL REINFORCEMENT PLACEMENT IN THE NUDURA FORM, SPACING OF HORIZONTAL REINFORCEMENT TO BE SPECIFIED AT 18" (457mm) O.C. AND VERTICAL REINFORCEMENT TO BE SPECIFIED AT MULTIPLES OF 8" (203mm) O.C. REFER TO NUDURA REINFORCEMENT PLACEMENT DETAILS.

This detail is for general informational purposes, only. The project design professional determines, in its sole discretion, whether this detail or a functionally equivalent detail is best suited for the project with respect to any architecture, engineering, and design requirements, including any local building code requirements. If this document is not reviewed and the product is not approved for use by a licensed design professional, the customer agrees that the detail may contain substantive flaws requiring correction, and hereby releases Tremco CPG Inc. and Prebuck, LLC from any and all liability related to the design and installation of the product. This detail is subject to change without notice. Contact Tremco and Prebuck to ensure you have the most recent version.

Non-Combustible Construction - Roof Connections



Nudura Technical Support: 866-468-6299
International: +1 705-726-9499

Detail: Nudura 8" (203mm) Form Unit, Hollow Core Precast Roof, Exterior Side Wall, Exterior Finish as Specified

Drawn by: TVC

Checked by: KS

Scale: 1:8

Revision #: 04

Revised by: KAB

Date: 3/13/2024

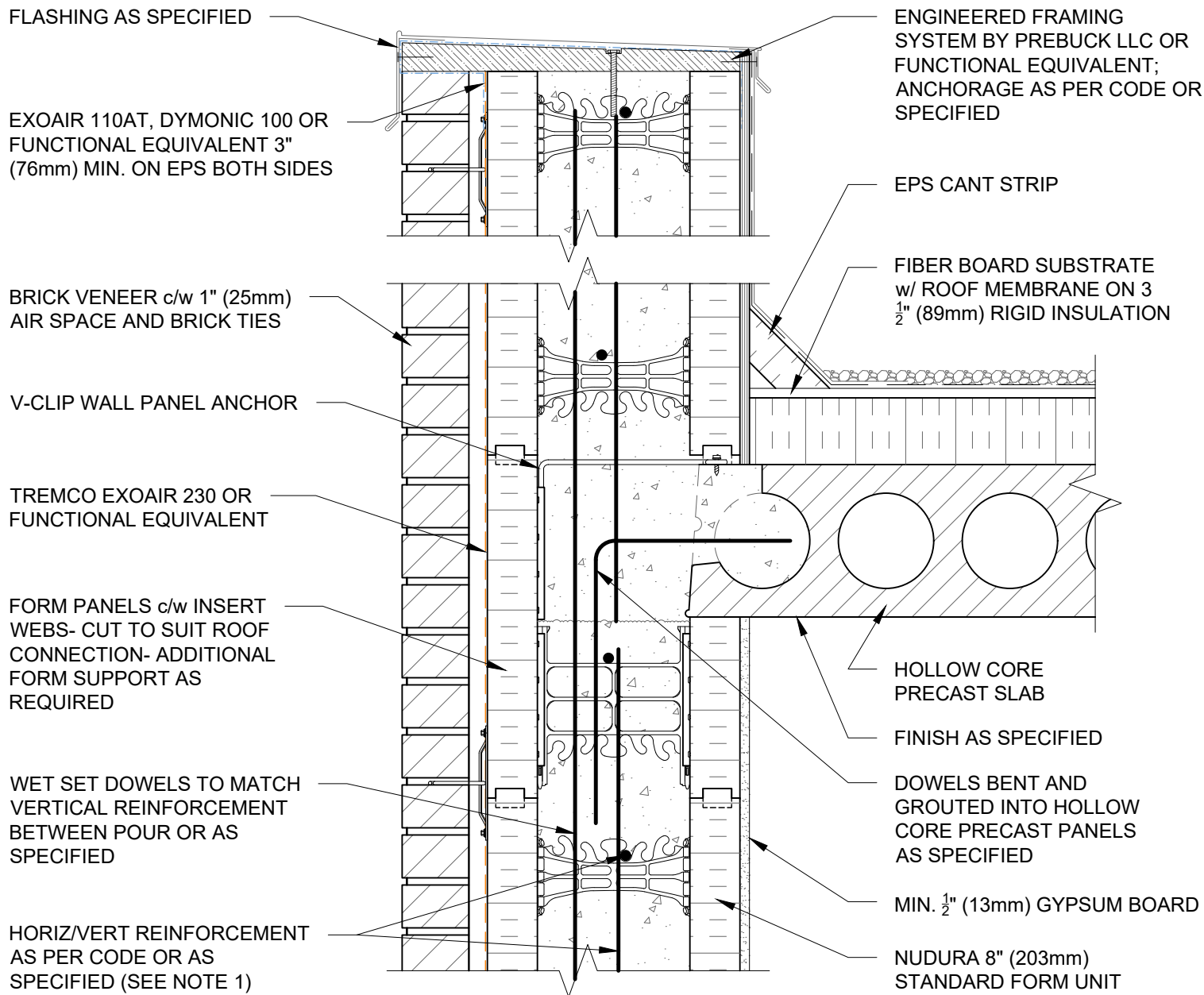
File Name:

F8E03



Construction Products Group

www.tremcocpg.com



NOTES:

1) FOR OPTIMAL REINFORCEMENT PLACEMENT IN THE NUDURA FORM, SPACING OF HORIZONTAL REINFORCEMENT TO BE SPECIFIED AT 18" (457mm) O.C. AND VERTICAL REINFORCEMENT TO BE SPECIFIED AT MULTIPLES OF 8" (203mm) O.C. REFER TO NUDURA REINFORCEMENT PLACEMENT DETAILS.

This detail is for general informational purposes, only. The project design professional determines, in its sole discretion, whether this detail or a functionally equivalent detail is best suited for the project with respect to any architecture, engineering, and design requirements, including any local building code requirements. If this document is not reviewed and the product is not approved for use by a licensed design professional, the customer agrees that the detail may contain substantive flaws requiring correction, and hereby releases Tremco CPG Inc. and Prebuck, LLC from any and all liability related to the design and installation of the product. This detail is subject to change without notice. Contact Tremco and Prebuck to ensure you have the most recent version.

Non-Combustible Construction - Roof Connections



Nudura Technical Support: 866-468-6299
International: +1 705-726-9499

Detail: Nudura 8" (203mm) Form Unit, Hollow Core Precast Roof, Exterior Side Wall, Brick Veneer Finish

Drawn by: TVC

Checked by: KS

Scale: 1:8

Revision #: 04

Revised by: KAB

Date: 3/13/2024

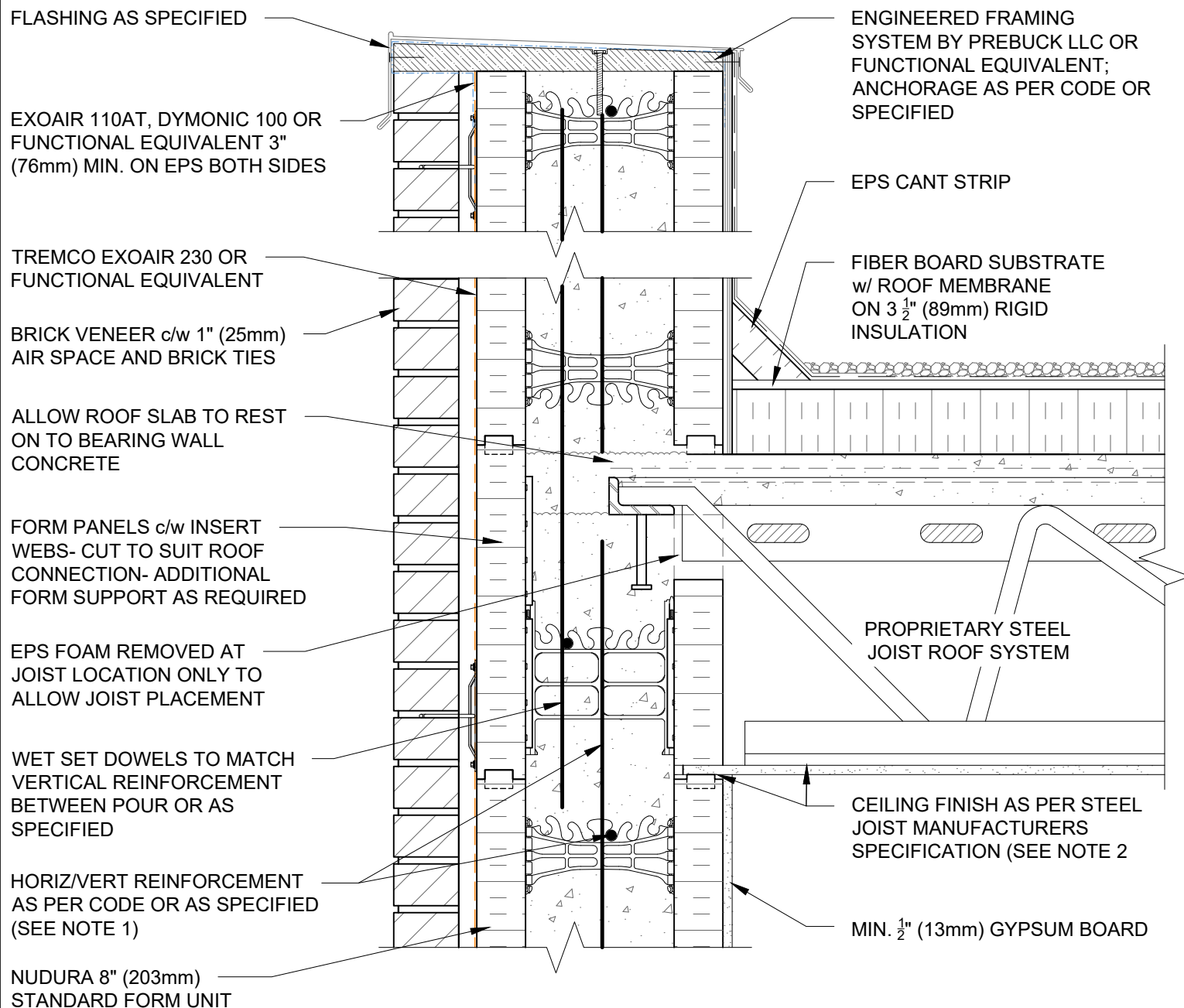
File Name:

F8E04



Construction Products Group

www.tremcocpg.com



NOTES:

1) FOR OPTIMAL REINFORCEMENT PLACEMENT IN THE NUDURA FORM, SPACING OF HORIZONTAL REINFORCEMENT TO BE SPECIFIED AT 18" (457mm) O.C. AND VERTICAL REINFORCEMENT TO BE SPECIFIED AT MULTIPLES OF 8" (203mm) O.C. REFER TO NUDURA REINFORCEMENT PLACEMENT DETAILS. (WHERE GYPSUM BOARD IS REQUIRED TO 2) COMPLETE FIRE RATED ASSEMBLY, EPS FOAM KERF CUT TO ENABLE CEILING FINISH TO PROVIDE THERMAL BARRIER CONTACT TO CONCRETE.

This detail is for general informational purposes, only. The project design professional determines, in its sole discretion, whether this detail or a functionally equivalent detail is best suited for the project with respect to any architecture, engineering, and design requirements, including any local building code requirements. If this document is not reviewed and the product is not approved for use by a licensed design professional, the customer agrees that the detail may contain substantive flaws requiring correction, and hereby releases Tremco CPG Inc. and Prebuck, LLC from any and all liability related to the design and installation of the product. This detail is subject to change without notice. Contact Tremco and Prebuck to ensure you have the most recent version.

Non-Combustible Construction - Roof Connections



Nudura Technical Support: 866-468-6299
International: +1 705-726-9499

Detail: Nudura 8" (203mm) Form Unit, Steel Joist Roof, Exterior Bearing Wall, Brick Veneer Finish

Drawn by: TVC

Checked by: KS

Scale: 1:8

Revision #: 04

Revised by: KAB

Date: 3/13/2024

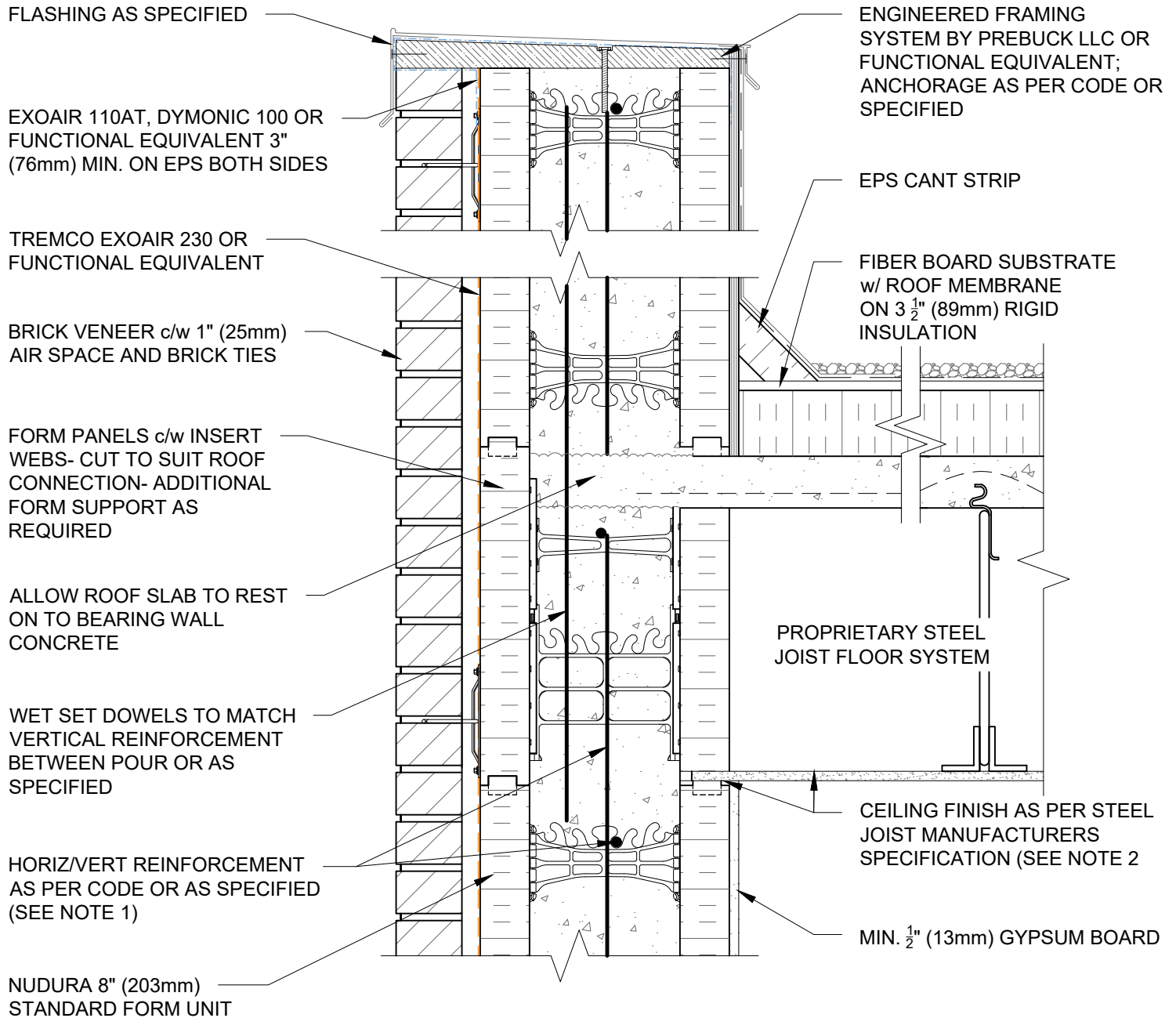
File Name:

F8F01



Construction Products Group

www.tremcocpg.com



NOTES:

1) FOR OPTIMAL REINFORCEMENT PLACEMENT IN THE NUDURA FORM, SPACING OF HORIZONTAL REINFORCEMENT TO BE SPECIFIED AT 18" (457mm) O.C. AND VERTICAL REINFORCEMENT TO BE SPECIFIED AT MULTIPLES OF 8" (203mm) O.C. REFER TO NUDURA REINFORCEMENT PLACEMENT DETAILS.

2) WHERE GYPSUM BOARD IS REQUIRED TO COMPLETE FIRE RATED ASSEMBLY, EPS FOAM KERF CUT TO ENABLE CEILING FINISH TO PROVIDE THERMAL BARRIER CONTACT TO CONCRETE.

This detail is for general informational purposes, only. The project design professional determines, in its sole discretion, whether this detail or a functionally equivalent detail is best suited for the project with respect to any architecture, engineering, and design requirements, including any local building code requirements. If this document is not reviewed and the product is not approved for use by a licensed design professional, the customer agrees that the detail may contain substantive flaws requiring correction, and hereby releases Tremco CPG Inc. and Prebuck, LLC from any and all liability related to the design and installation of the product. This detail is subject to change without notice. Contact Tremco and Prebuck to ensure you have the most recent version.

Non-Combustible Construction - Roof Connections



Nudura Technical Support: 866-468-6299
International: +1 705-726-9499

Detail: Nudura 8" (203mm) Form Unit, Steel Joist Roof, Exterior Side Wall,
Brick Veneer Finish

Drawn by: TVC

Checked by: KS

Scale: 1:8

Revision #: 04

Revised by: KAB

Date: 3/13/2024

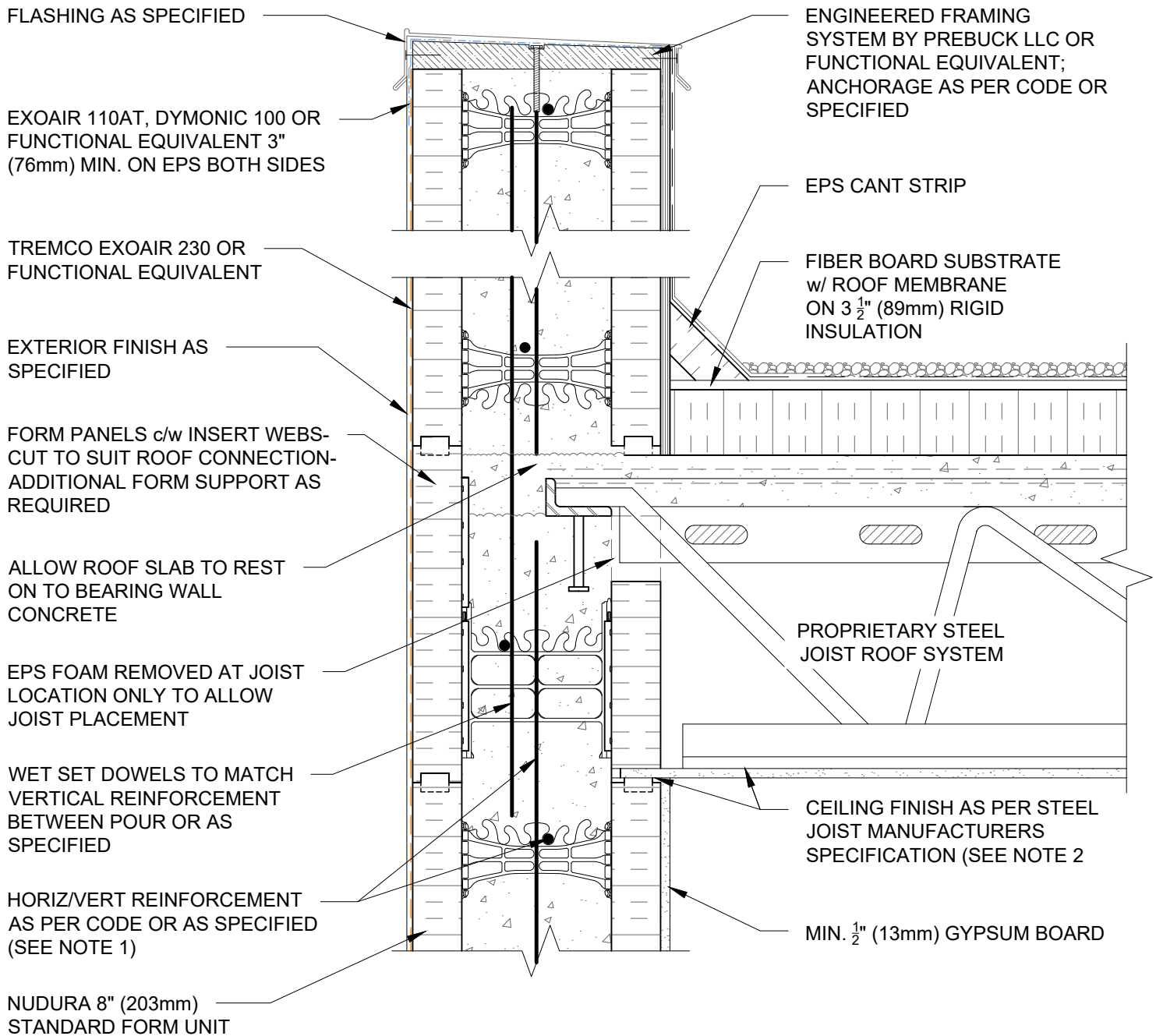
File Name:

F8F02



Construction Products Group

www.tremcpcpg.com



NOTES:

1) FOR OPTIMAL REINFORCEMENT PLACEMENT IN THE NUDURA FORM, SPACING OF HORIZONTAL REINFORCEMENT TO BE SPECIFIED AT 18" (457mm) O.C. AND VERTICAL REINFORCEMENT TO BE SPECIFIED AT MULTIPLES OF 8" (203mm) O.C. REFER TO NUDURA REINFORCEMENT PLACEMENT DETAILS.

2) WHERE GYPSUM BOARD IS REQUIRED TO COMPLETE FIRE RATED ASSEMBLY, EPS FOAM KERF CUT TO ENABLE CEILING FINISH TO PROVIDE THERMAL BARRIER CONTACT TO CONCRETE.

This detail is for general informational purposes, only. The project design professional determines, in its sole discretion, whether this detail or a functionally equivalent detail is best suited for the project with respect to any architecture, engineering, and design requirements, including any local building code requirements. If this document is not reviewed and the product is not approved for use by a licensed design professional, the customer agrees that the detail may contain substantive flaws requiring correction, and hereby releases Tremco CPG Inc. and Prebuck, LLC from any and all liability related to the design and installation of the product. This detail is subject to change without notice. Contact Tremco and Prebuck to ensure you have the most recent version.

Non-Combustible Construction - Roof Connections



Nudura Technical Support: 866-468-6299
International: +1 705-726-9499

Detail: Nudura 8" (203mm) Form Unit, Steel Joist Roof, Exterior Wall, Exterior Finish as Specified

Drawn by: TVC

Checked by: KS

Scale: 1:8

Revision #: 04

Revised by: KAB

Date: 3/13/2024

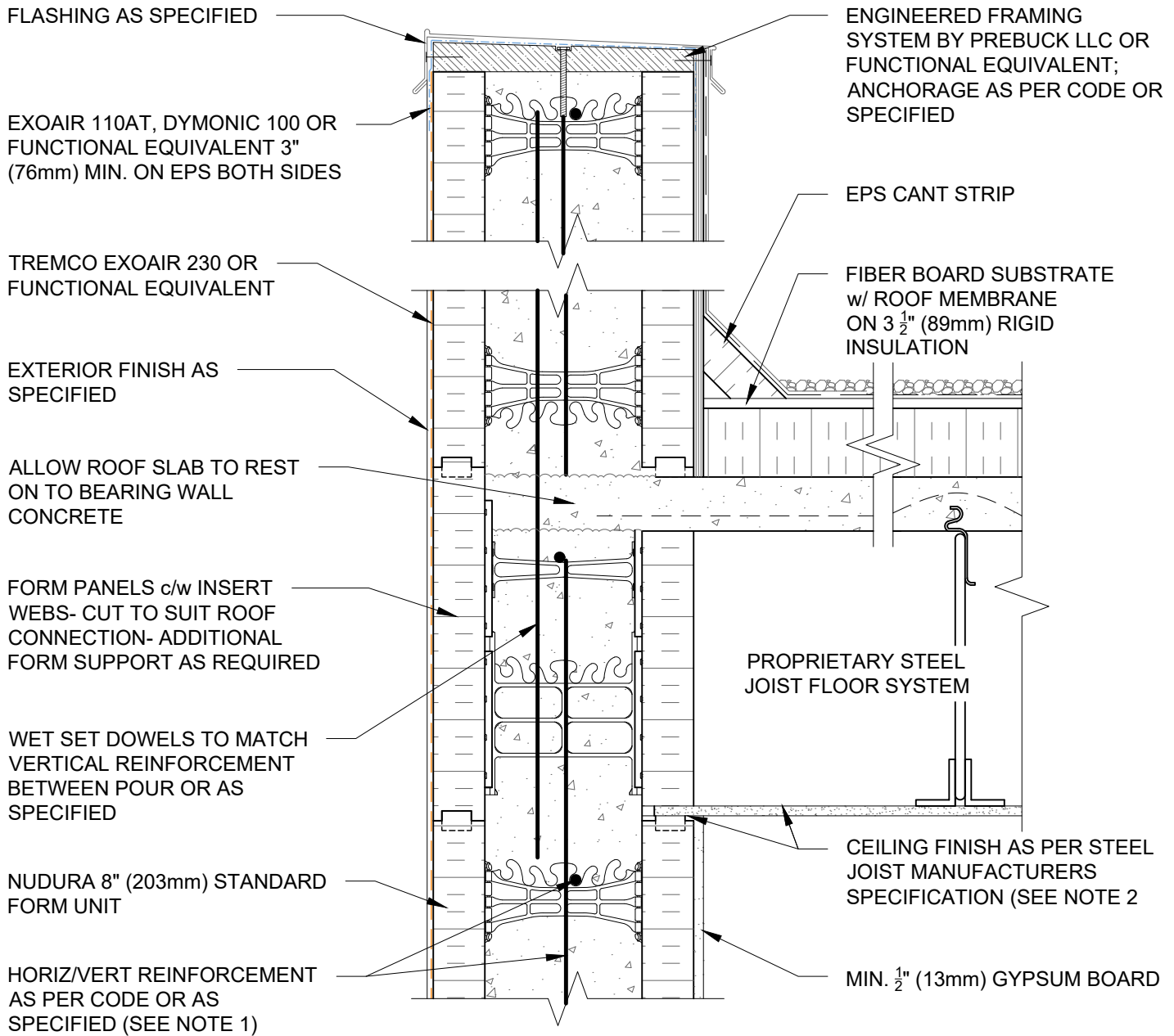
File Name:

F8F03



Construction Products Group

www.tremcocpg.com



NOTES:

1) FOR OPTIMAL REINFORCEMENT PLACEMENT IN THE NUDURA FORM, SPACING OF HORIZONTAL REINFORCEMENT TO BE SPECIFIED AT 18" (457mm) O.C. AND VERTICAL REINFORCEMENT TO BE SPECIFIED AT MULTIPLES OF 8" (203mm) O.C. REFER TO NUDURA REINFORCEMENT PLACEMENT DETAILS.

2) WHERE GYPSUM BOARD IS REQUIRED TO COMPLETE FIRE RATED ASSEMBLY, EPS FOAM KERF CUT TO ENABLE CEILING FINISH TO PROVIDE THERMAL BARRIER CONTACT TO CONCRETE.

This detail is for general informational purposes, only. The project design professional determines, in its sole discretion, whether this detail or a functionally equivalent detail is best suited for the project with respect to any architecture, engineering, and design requirements, including any local building code requirements. If this document is not reviewed and the product is not approved for use by a licensed design professional, the customer agrees that the detail may contain substantive flaws requiring correction, and hereby releases Tremco CPG Inc. and Prebuck, LLC from any and all liability related to the design and installation of the product. This detail is subject to change without notice. Contact Tremco and Prebuck to ensure you have the most recent version.

Non-Combustible Construction - Roof Connections



Nudura Technical Support: 866-468-6299
International: +1 705-726-9499

Detail: Nudura 8" (203mm) Form Unit, Steel Joist Roof, Exterior Side Wall,
Exterior Finish as Specified

Drawn by: TVC

Checked by: KS

Scale: 1:8

Revision #: 04

Revised by: KAB

Date: 3/13/2024

File Name:

F8F04



Construction Products Group

www.tremcocpg.com

FLASHING AS SPECIFIED

EXOAIR 110AT, DYMONIC 100 OR
FUNCTIONAL EQUIVALENT 3"
(76mm) MIN. ON EPS BOTH SIDES

BRICK VENEER c/w 1" (25mm)
AIR SPACE AND BRICK TIES

TREMCO EXOAIR 230 OR
FUNCTIONAL EQUIVALENT

FORM PANELS c/w INSERT
WEBS- CUT TO SUIT ROOF
CONNECTION- ADDITIONAL
FORM SUPPORT AS
REQUIRED

WET SET DOWELS TO MATCH
VERTICAL REINFORCEMENT
BETWEEN POUR OR AS SPECIFIED

HORIZ/VERT REINFORCEMENT
AS PER CODE OR AS
SPECIFIED (SEE NOTE 1)

ENGINEERED FRAMING
SYSTEM BY PREBUCK LLC OR
FUNCTIONAL EQUIVALENT;
ANCHORAGE AS PER CODE OR
SPECIFIED

EPS CANT STRIP

FIBER BOARD SUBSTRATE
w/ ROOF MEMBRANE ON 3
 $\frac{1}{2}$ " (89mm) RIGID INSULATION

CAST IN PLACE
CONCRETE FLAT SLAB

FINISH AS SPECIFIED

DOWELS FIELD BENT
INTO SLAB AS SPECIFIED

MIN. $\frac{1}{2}$ " (13mm) GYPSUM BOARD

NUDURA 8" (203mm)
STANDARD FORM UNIT

NOTES:

1) FOR OPTIMAL REINFORCEMENT PLACEMENT IN THE NUDURA FORM,
SPACING OF HORIZONTAL REINFORCEMENT TO BE SPECIFIED AT 18"
(457mm) O.C. AND VERTICAL REINFORCEMENT TO BE SPECIFIED AT
MULTIPLES OF 8" (203mm) O.C. REFER TO NUDURA REINFORCEMENT
PLACEMENT DETAILS.

This detail is for general informational purposes, only. The project design professional determines, in its sole discretion, whether this detail or a functionally equivalent detail is best suited for the project with respect to any architecture, engineering, and design requirements, including any local building code requirements. If this document is not reviewed and the product is not approved for use by a licensed design professional, the customer agrees that the detail may contain substantive flaws requiring correction, and hereby releases Tremco CPG Inc. and Prebuck, LLC from any and all liability related to the design and installation of the product. This detail is subject to change without notice. Contact Tremco and Prebuck to ensure you have the most recent version.

Non-Combustible Construction - Roof Connections



Nudura Technical Support: 866-468-6299
International: +1 705-726-9499

Detail: Nudura 8" (203mm) Form Unit, Concrete Flat Plate, Exterior Bearing Wall,
Brick Veneer Finish

Drawn by: KS

Checked by: KS

Scale: 1:8

Revision #: 01

Revised by: KAB

Date: 3/13/2024

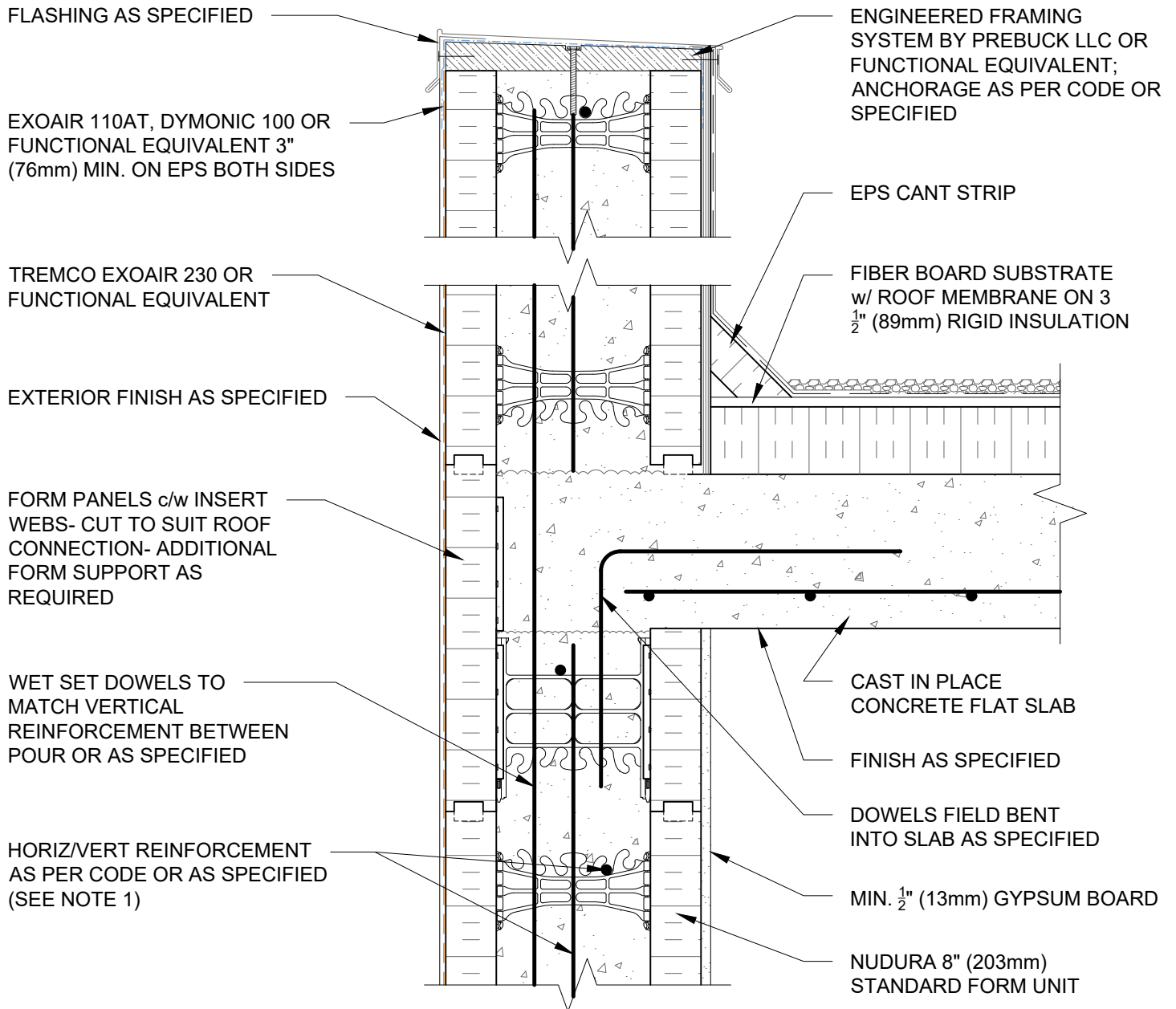
File Name:

F8G01



Construction Products Group

www.tremcocpg.com





NOTES:

1) FOR OPTIMAL REINFORCEMENT PLACEMENT IN THE NUDURA FORM, SPACING OF HORIZONTAL REINFORCEMENT TO BE SPECIFIED AT 18" (457mm) O.C. AND VERTICAL REINFORCEMENT TO BE SPECIFIED AT MULTIPLES OF 8" (203mm) O.C. REFER TO NUDURA REINFORCEMENT PLACEMENT DETAILS.

This detail is for general informational purposes, only. The project design professional determines, in its sole discretion, whether this detail or a functionally equivalent detail is best suited for the project with respect to any architecture, engineering, and design requirements, including any local building code requirements. If this document is not reviewed and the product is not approved for use by a licensed design professional, the customer agrees that the detail may contain substantive flaws requiring correction, and hereby releases Tremco CPG Inc. and Prebuck, LLC from any and all liability related to the design and installation of the product. This detail is subject to change without notice. Contact Tremco and Prebuck to ensure you have the most recent version.

Non-Combustible Construction - Roof Connections

 Nudura Technical Support: 866-468-6299 International: +1 705-726-9499	Detail: Nudura 8" (203mm) Form Unit, Concrete Flat Plate, Exterior Bearing Wall, Exterior Finish as Specified			File Name:
	Drawn by: KS	Checked by: KS	Scale: 1:8	F8G02
	Revision #: 01	Revised by: KAB	Date: 3/13/2024	
	www.tremcocpg.com			


Construction Products Group